



## THE COMPANY

# PROFILE

 **AMY GRUPO - Build today, last forever!**

# INDEX

About the Company 01

Our Milestones 05

Company Capacity 08

Domestic and Overseas Markets 09

Our technology and products 12

Certificates and Awards 22





## AMY GRUPO

Established in 2015, AMY GRUPO is an industrial complex producing and trading in building materials. Situated in Vinh Phuc province, the cradle of the Vietnamese ceramics industry, our company provides advanced, environmentally friendly products, leading the way in the ceramics and porcelain market in Vietnam at the same time exporting to foreign markets. Founded and operated by highly experienced leaders with experience heading up many large corporations, AMY GRUPO manufactures a wide range of products from luxury tiles, and SPC flooring, to glazed ceramic roof tiles.

AMY GRUPO is committed to making the most of both our material and human resources in our quest to create value together. During 8 years of development, AMY GRUPO has always been a prestigious partner, and a reliable tile manufacturer for our valued customers, partners, and investors by providing high-quality products to several home and abroad projects.

With unremitting efforts, AMY GRUPO unanimously strives to become an international brand with the goal of bringing about sustainable values to customers and partners, the same as our company's slogan: "Build today, last forever."

# MISSION

01

## CUSTOMER-CENTRIC

Take human satisfaction as the guideline for all activities production and business activities of AMY GRUPO.

02

## AESTHETIC PRODUCT

Pioneering in research, creation, and creating new values along with progressive trends in technology, art, functionality, and service.

03

## TREND LEADING

Leading the trend of eco lifestyle and green consumption, manifested by internationally standardized flooring products free from harmful compounds, thus protecting consumers health.

04

## VALUE-ADDED ORIENTATION

Optimizing productivity and product quality as well as keeping commitments to the projects of interest, and spreading progressive values and humanity

# CORE VALUES



PIONEERING DIFFERENCE

AMY  
GRUPO



SCIENCE



QUALITY



COMMITMENT



SINCERITY

# BOARD OF DIRECTORS

AMY GRUPO's journey of construction and development is the result of the efforts and enthusiasm of all members of the company, under the guidance and skillful management of the Board of Directors - key personnel with their talent and bravery for the prosperity of AMY GRUPO.



**Mr. DINH QUOC TUAN**

Vice Chairman of the Board of Directors,  
General Director



**Mr. LUONG VAN MY**

Chairman



**Mr. TRAN TUAN DAI**

Vice Chairman of the Board of Directors,  
Deputy General Director



**Mr. TRAN NGOC ANH**

Board Member

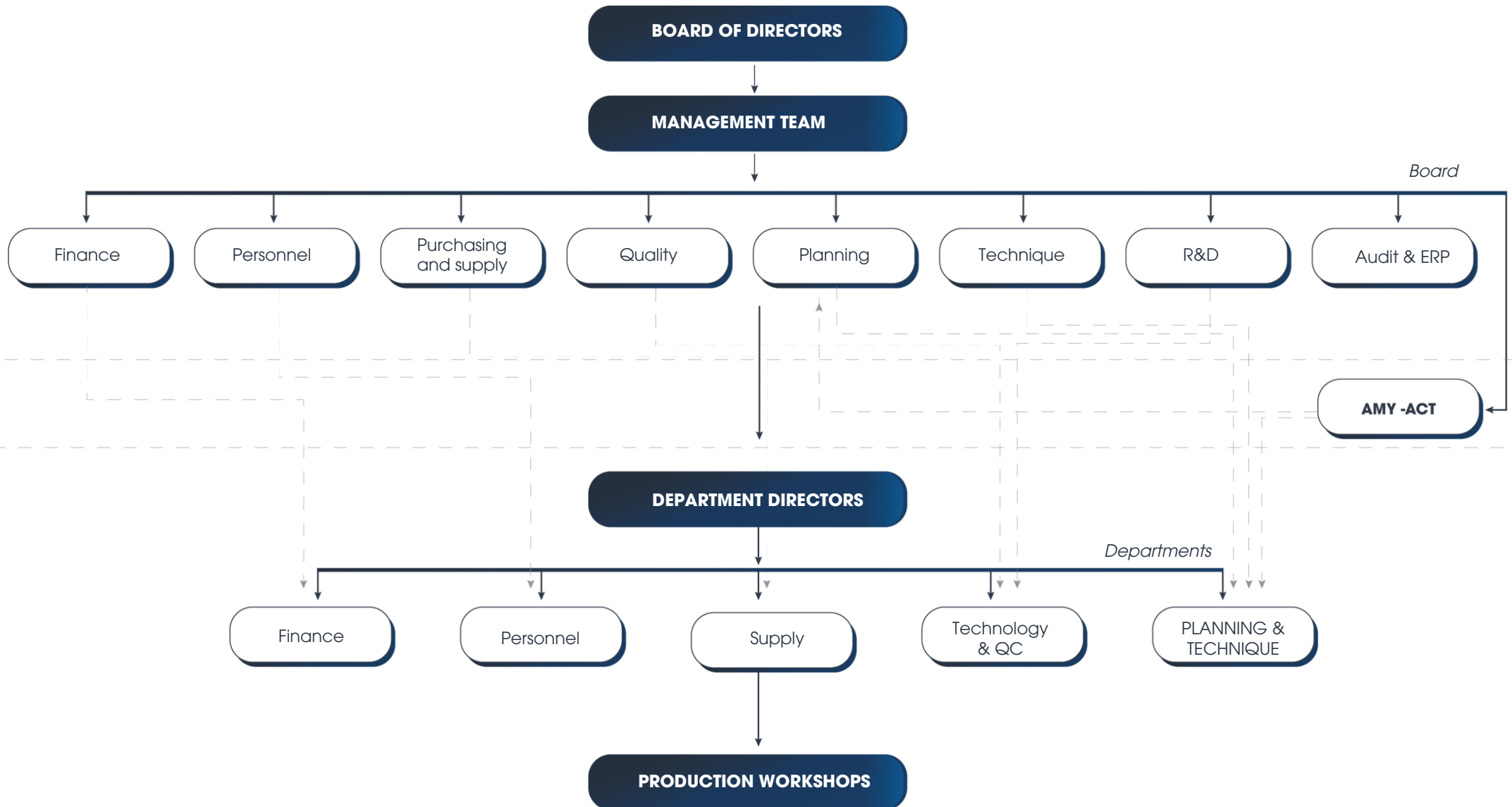


**Mr. NGUYEN NGOC SON**

Board Member

# BASIC ORGANIZATION CHART

AMY GRUPO





# CORPORATE ECOSYSTEM

AMY GRUPO



## BUSINESS AREAS

Trading, import and export of products

LVT, WPC, Hybrid floor, wall panel, Decking Manufacturing

Tiles Manufacturing

SPC flooring Manufacturing

Roof Tiles Manufacturing

# HUMAN RESOURCE

AMY GRUPO members ensure professionalism, dedication, always ready to support and answer all customer questions, creative capacity, high adaptability, and the ability to continuously update new skills, improve expertise on the digital transformation technology journey to serve the business strategy of business

## HUMAN RESOURCE STRATEGY



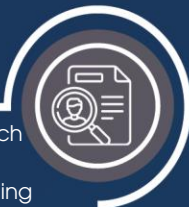
01

AMY builds an environment in which humanity, teammates, and sincerity are emphasized to nurture these comprehensive talents for success.



02

Search, choose, discover, and develop the potential of each staff to educate and train to integrate into the AMY environment, achieve high labor productivity and outstanding success



+2000 EMPLOYEES



### MANAGEMENT TEAM

- Graduated from university or higher, have management skills and high professional qualifications. Extensive knowledge in the field of Building Materials and a comprehensive vision of the general market.



### EMPLOYEES

- Are citizens with the Global Citizen spirit - young, dynamic, always ready to receive and create new values
- Besides professional knowledge, you are also equipped with debate skills, open thinking, independence and teamwork
- Behave civilized, polite, open, and sincere, and always help colleagues

# PRODUCTION CAPACITY

Always pioneering, applying advanced technology, and taking advantage of superior techniques and modern machinery according to European standards, AMY GRUPO's factories are fully capable and scaled to adapt and develop with partner strategies.



## Tiles and Roof Tiles products

27 MIL SQM/ YEAR

11 PRODUCTION LINES



## SPC FLOOR PRODUCT

22 MIL SQM/ YEAR

18 PRODUCTION LINES



## LVT, WPC, HYBRID, WALL, DECKING

8.6 MIL SQM/ YEAR

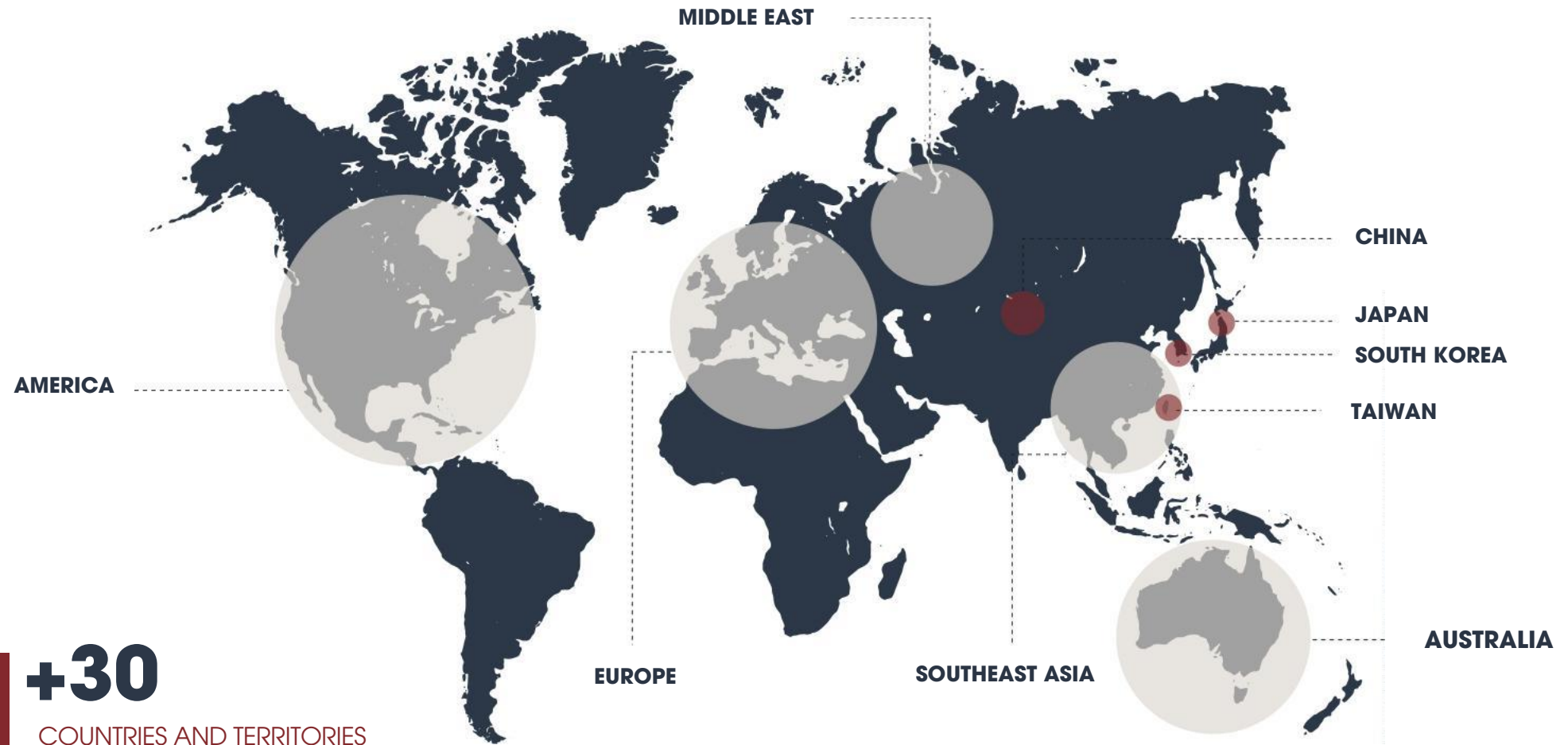
8 PRODUCTION LINES

**TOTAL PRODUCT CAPACITY: 57,6 MILLION M2/YEAR**

AMY GRUPO is constantly diversifying its product lines in the field of finishing construction materials with products of outstanding quality luxurious aesthetic designs that are popular in the US and European markets and are in line with the ever-changing needs and tastes of consumers.

- ▶▶▶ Porcelain & Ceramic Tiles
- ▶▶▶ Glazed Ceramic Roof Tiles

- ▶▶▶ SPC Flooring
- ▶▶▶ WPC, LVT, Hybrid, Wall panel, decking



## EXPORTING MARKETS

The international construction materials industry always has strict standards, regulations, and technical indicators to evaluate product quality. To conquer the most demanding markets such as the US and Europe, AMY GRUPO, in addition to improving its professional technical level to fully master the world's advanced technologies, also develops an identity and style. Separately by the quality and design of the products AMY provides. Thereby, meeting the needs and tastes of both domestic and international customers, and becoming a reliable partner for projects in and outside the region.

# DOMESTIC MARKET

**+120 SHOWROOM**  
NATIONWIDE

Nationwide showroom system over 63 provinces

The showroom is scientifically and professionally designed with an impressive sample room space model

Diversify products displayed with the latest trend



## • SHOWROOM

# +150 PROJECTS ACROSS THE COUNTRY

AMY GRUPO has become a professional supplier for projects of different types and established strong business partnerships:

- ▶ **5-star hotels, villas, shopping centers:** Crown Phu Quoc, Muong Thanh Ha Long, Scenia Bay Nha Trang, Virgo Nha Trang, Arnest Nha Trang, Pullman Hai Phong, Lotte Mall West Lake Hanoi, Aeon Mall Hai Phong, ...
- ▶ High-end apartment system: The MarQ, Sora Gardens, The Panorama, Eco Green,...
- ▶ Large Contractors: Coteccons, Unicons, Delta, Ricons, Newtecons, Ecoba,...
- ▶ Investors: MIK Group, An Gia Group, Novaland, Xuan Mai Corp, BRG, Muong Thanh, Hongkong Land, Đạt Xanh,...

## OUTSTANDING PROJECTS



# TECHNOLOGY SOLUTIONS

## SURFACE TECHNOLOGY

Smart Tek printing technology creates realistic natural material shapes, with a safe anti-slip coefficient, resistant to the effects of chemicals.

**SMART TEK<sup>+</sup>**  
AMYGRES smart microstructure natural surface

01



02

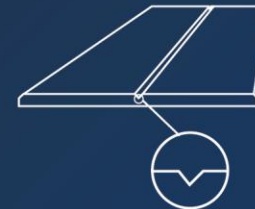
## ANTI-SLIP TECHNOLOGY

Optimal solution to ensure user safety



DIN 51130 - European Standard

03



04

## EIR SURFACE FOR SPC

Advanced surface embossing technology enhances depth, forms a solid texture, and gives a realistic appearance to the surface



05

06



## ENGINEERED SPC

Engineering SPC offers better embossing options, is more consistent in terms of performance, and provides a soft touch and effective sound absorption.

## CARPENTERED EDGE

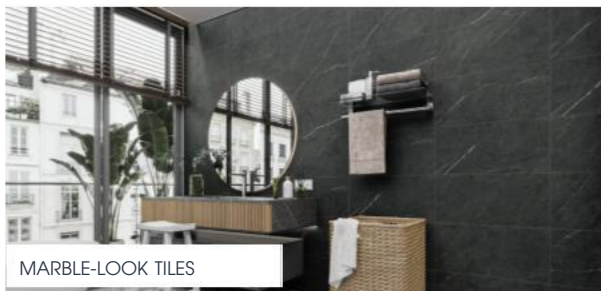
A bevel edge covered by a protective coating makes SPC flooring more durable and natural. The depth in the floor creates a 3D effect that resonates with the interior space and brings sophistication and meticulousness.

## GREEN TECHNOLOGY

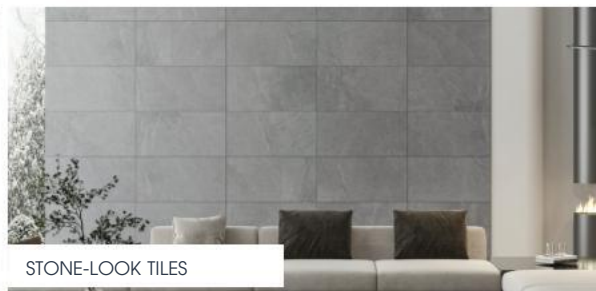
ANS technology, negative ion with antibacterial mechanism, helps prevent and kill bacteria, providing a clean environment for consumers.

# 01 PORCELAIN & CERAMIC TILES

At AMY, tile collections are designed according to modern inspiration with the latest tile trends in the world, suitable for all spaces.



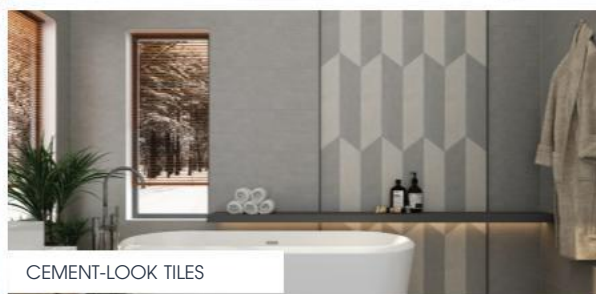
MARBLE-LOOK TILES



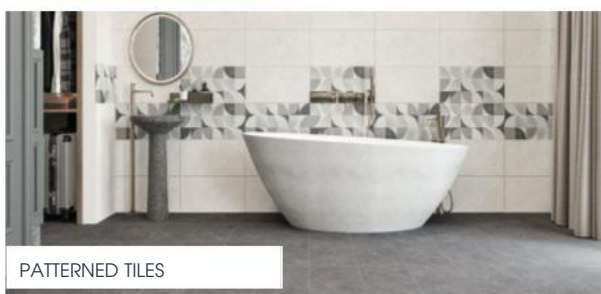
STONE-LOOK TILES



WOOD-LOOK TILES



CEMENT-LOOK TILES



PATTERNED TILES

## 05 DIVERSE DESIGNS

### SURFACES

### 22 SURFACES



Satin Matt



Regular Matt



Matt with protection coating



Matt Carving



Lapato



Glossy



Polish



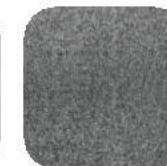
Transparent



Glossy on matt



Glue & Grit



Sugar



Smart Tek

And other effects: Baby skin, Micro Diamond, grit soft polish, Metallic effect, Vector diamond polished, Horn, Smalti...

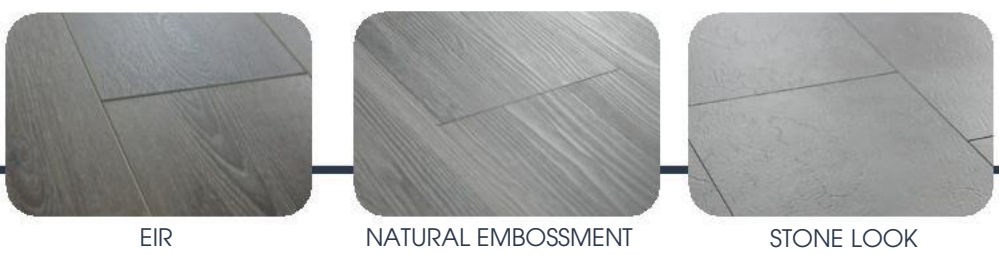
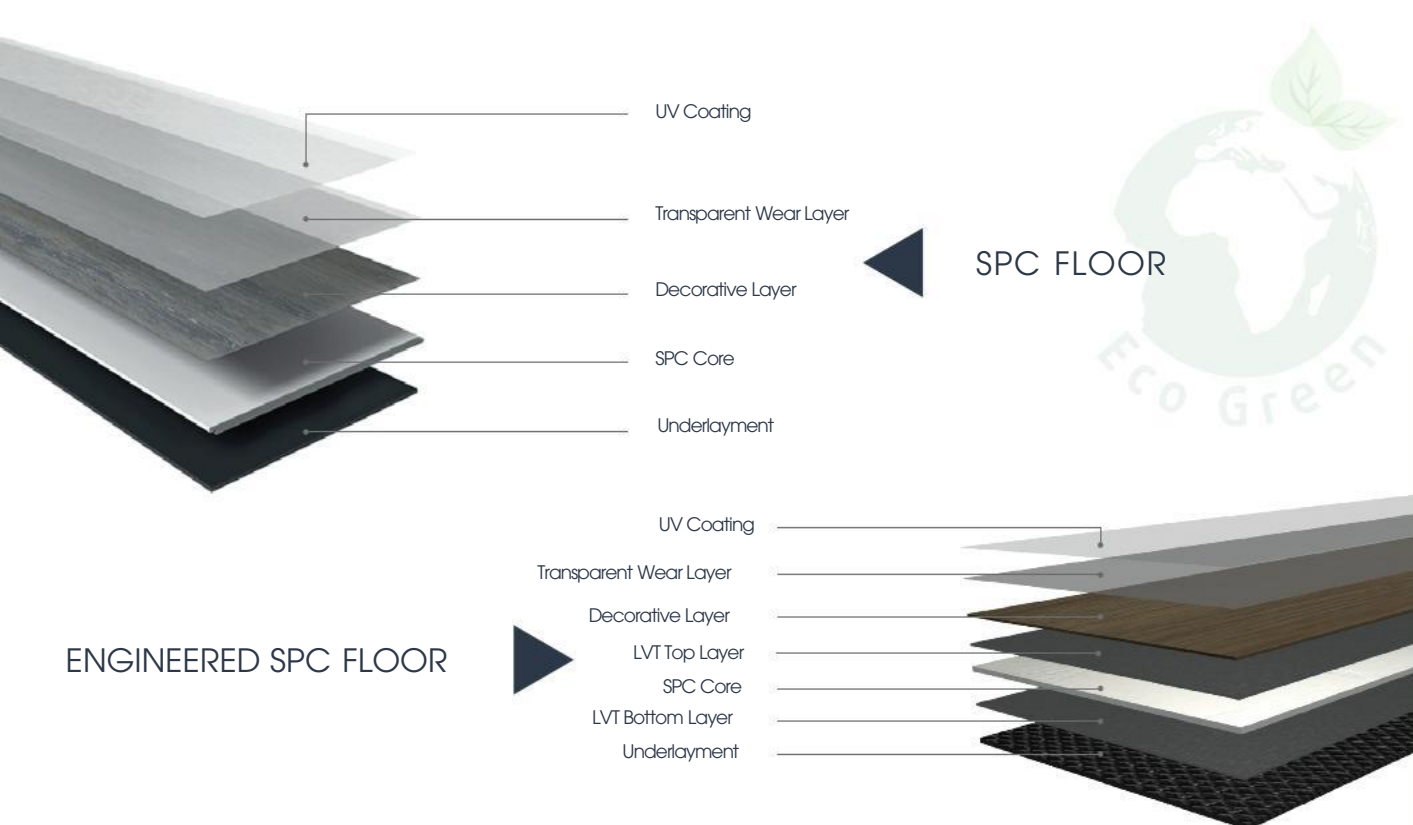
## SIZES

TILES

30x60 cm, 40x80 cm, 60x60 cm, 80x80 cm, 60x120 cm, 15x90 cm, 20x90 cm, 20x120 cm, 120x280 cm,...

ARCHITECTURAL TILES/ MOSAICS

Diverse shapes and sizes such as: hexagonal, square, rectangular mosaic, bullnose,...



# 02 SPC WALL AND FLOORING

Thickness range: 3.2mm to 6 mm      Width (182/228/305/410 mm)      Length (610/820/1220/1524/1800 mm)

Underlayment: IXPE, EVA, Cork

Wearlayer: 0.15mm, 0.2mm, 0.3mm, 0.5mm, 0.55mm

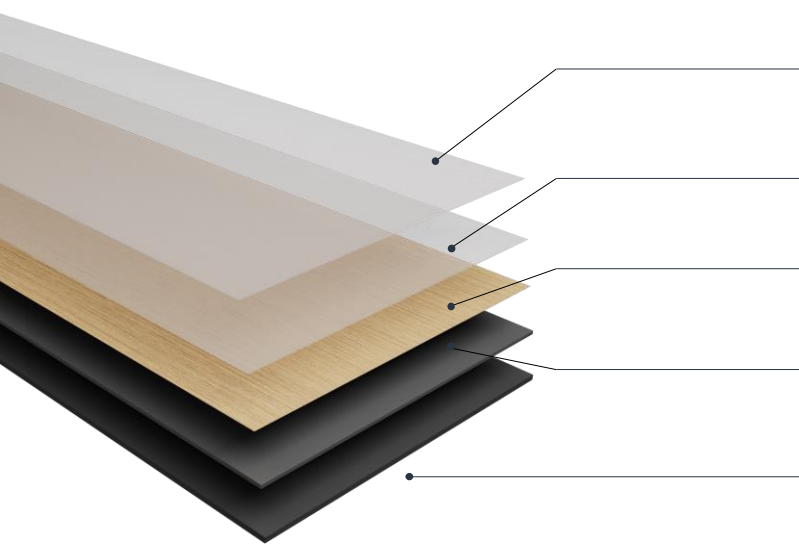
Profile: Unilin, I4F

Bevel: Micro bevel/ Carpentered Edge

# 03. LUXURY VINYL TILES (LVT)

Total capacity: 410,000 m<sup>2</sup>/month (2 lines: 1 LVT single extrusion line and 1 LVT double extrusion line)

## DRYBACK – Single-layer



### 1. UV Coating:

Reducing color fading by UV beam ray, anti-scratch, stain resistant therefore saving maintenance costs.

### 2. Wear Layer:

Abrasion resistance, durability for everyday wear and tear. the thicker the better

### 3. Décor PVC film:

Natural wood, stone look, or Woven design

### 4. LVT core:

Creates dimensional stable, waterproof and fireproof characteristics

### 5. Balancing back layer (Optional):

Provides extra balancing for plank which prevents cupping or warping (better curling characteristic)

# 03

## LUXURY VINYL TILES

1 line/ Capacity: 170,000 SQM/ month

**Multilayer LVT (with/without fiber mesh):** Multi-layer structure for durable and better dimensional stability



**UV coating:**

Reducing color fading by UV beam ray, anti-scratch, stain resistant therefore saving maintenance costs.

**Wear Layer:**

Abrasion resistance, durability for everyday wear and tear. the thicker the better

**Décor PVC film:**

Natural wood, stone look, or Woven design

**Vinyl layer 1:**

LVT core, **more elastic**

**Fiber mesh (with or without)- normally with fiber mesh:**

to prevent shrinkage that reducing curling or warping and better dimension stability.

**Vinyl layer 2:**

making the balancing and elasticity for the products

**Balancing back layer (Optional) :**

Provides extra balancing for plank which prevents cupping or warping (better curling characteristic)



# 03. LUXURY VINYL TILES

## TECHNICAL SPECIFICATIONS

### LUXURY VINYL TILES

No.	LVT Thickness (mm)	Wear layer Thickness (mm)
1	2.0	0.15, 0.2, 0.3 6 mil-8mil -12 mil
2	2.5	0.15, 0.2, 0.3, 0.5 6 mil-8mil-12mil-20 mil
3	3.0	0.15, 0.2, 0.3, 0.5 6 mil-8mil-12mil-20 mil
4	3.5	0.15, 0.2, 0.3, 0.5, 0.55 6 mil-8mil-12mil-20 mil-22 mil
5	4.0	0.15, 0.2, 0.3, 0.5, 0.55 6 mil-8mil-12mil-20 mil-22 mil
6	4.5	0.15, 0.2, 0.3, 0.5, 0.55, 0.7 6 mil-8mil-12mil-20 mil-22 mil-28 mil
7	5.0	0.15, 0.2, 0.3, 0.5, 0.55, 0.7, 0.75 6 mil-8mil-12mil-20 mil-22 mil-28 mil-30mil

#### DRYBACK – Single-layer

- **Size (mm):** 157\*915, 189\*1220, 320\*610
- **Thickness:** 2.0-3.0 mm
- **Wear layer:** 0.15mm, 0.2mm, 0.3mm, 0.5mm
- **Various patterns :** Stone grain, EIR, Natural embossing wood look, Woven look

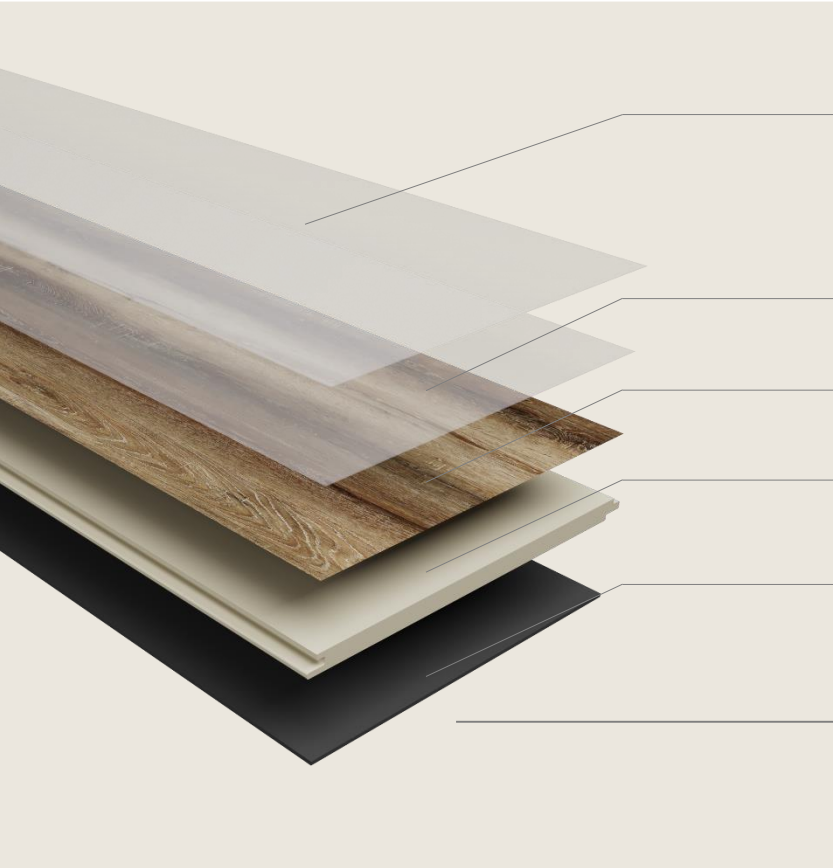
#### DRYBACK – Multi-layer

- **Size (mm):** 157\*915, 189\*1220, 320\*610
- **Thickness:** 3.5 -5.0 mm
- **Wear layer:** 0.15mm, 0.2mm, 0.3mm, 0.5mm, 0.7mm
- **Various patterns :** Stone grain, EIR, Natural embossing wood look, Woven look

# 04

## HYBRID FLOORING

Hybrid flooring Capacity: 3 lines ( about 160,000 m2/month)



### UV coating:

*Reducing color fading by UV beam ray, anti-scratch, stain resistant therefore saving maintenance costs.*

### Wear Layer:

*Abrasion resistance, durability for everyday wear and tear. the thicker the better*

### Décor PVC film:

*natural wood or stone look*

### Vinyl:

*LVT core, making the balancing and elasticity for the product*

### Foam Core:

*Lighter, Prevent expansion and contraction, superior stability*

### Underlayment (if requested):

*Better sound absorption and excellent underfoot feeling*



**Size (mm):** 147\*915, 147\*1220, 182\*1220, 182\*1524, 230\*1220, 230\*1524, 230\*1800, 305\*610

**Core Thickness:** 6.2-12 mm

**Profile:** Unilin, I4F

**Surface:** EIR/ Natural embossing




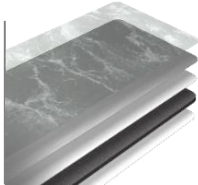

**Wear layer:** 0.15mm, 0.2mm, 0.3mm, 0.5mm, 0.55, 0.7mm, 0.75mm

**Bevel:** Micro bevel/ Carpentered Edge/ Press bevel

**Underlayment:** IXPE, EVA, Cork (1.0-1.5-2.0mm)

# 05. DURAWALL PANEL

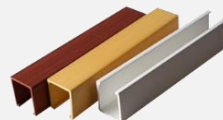
**Capacity:** 1 line Reinforced Hybrid Wall Panel: 61,000 m2/month + 1 line Rigid core : 91,000 m2/month

TYPES	STRUCTURE	SIZES
<p>Rigid core flat wall panel</p> 	<ol style="list-style-type: none"> <li><b>Scratch-Resistant Decorative Layer</b></li> <li><b>Rigid core:</b> Create dimensional stable, waterproof and fireproof</li> </ol>	<p><b>Width x length:</b> 400x2440/2800 mm</p> <p><b>Thickness:</b> 9 mm</p>
<p>Rigid core slat wall panel</p> 		<p><b>Width x length :</b> 228 x 2440/2800 mm</p> <p><b>Thickness:</b> 15 mm</p>
<p>Rigid core round shape wall panel</p> 		<p><b>Width x length :</b> 228 x 2440/2800 mm</p> <p><b>Thickness :</b> 15 mm</p>
<p>Reinforced Hybrid Wall Panel High Glossy</p> 	<ol style="list-style-type: none"> <li>PET + UV</li> <li>Decorative Film</li> <li>A layer core: Vinyl layer 1</li> <li>B foam core : Foam layer</li> <li>A layer core: Vinyl layer 2</li> </ol> <p><b>Density of Light weight foam wall: 0.6-0.8g/cm3</b></p>	<p><b>Size:</b></p> <ul style="list-style-type: none"> <li>➤ Width: 600/1200 mm</li> <li>➤ Length: 2600/2800/3200 mm</li> </ul> <p><b>Thickness : 6-12 mm</b></p> <p><b>Standard Thickness: 8.0mm</b></p> <p><b>Various patterns:</b> Wood look, Stone look, Feather look, Metal look</p> <p><b>Finish:</b> Matt, High Glossy</p>
<p>Reinforced Hybrid Wall Panel Matt</p> 	<ol style="list-style-type: none"> <li>Scratch-Resistant Decorative Layer</li> <li>A layer core: Vinyl layer 1</li> <li>B foam core : Foam layer</li> <li>A layer core: Vinyl layer 2</li> </ol> <p><b>Density of Light weight foam wall: 0.6-0.8g/cm3</b></p>	

**OTHERS:**



**2900\*50\*100mm**

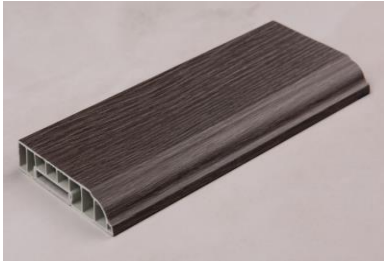


**2900\*40\*45mm**

# 06

## ACCESSORIES

Capacity: 1 lines ( about 71,000 PCS/month)



Skirting board  
**Size:** 2400\*80\*14mm



Flush Stair nose (round shape)  
**Size:** 2400\*110\*5\*25\*16mm



Flush Stair nose (square shape)  
**Size:** 2400\*115\*5\*35\*16mm



Concave Line  
**Size:** 2400\*20\*20\*14\*mm



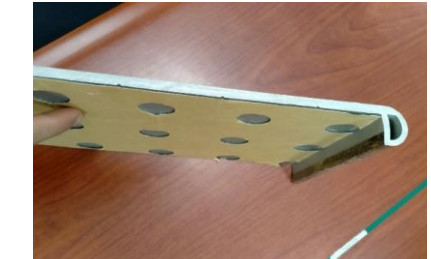
Quarter round  
**Size:** 2400\*20\*20\*16mm



T-molding  
**Size:** 2400\*45\*6mm



Reducer  
**Size:** 2400\*45\*9mm



Full piece Stair tread  
**Size:** 1220\*300\*5\*25\*16mm

### Accessory layers

1. **Wear layer:** Prevent color fading and anti-scratch
2. **Decor:** Film with Décor
3. **Rigid core:** Create dimensional stable, waterproof and fireproof

# 07 GLAZED CERAMIC ROOF TILES

With modern tones, unique patterns, and attractive surfaces, AMY GRUPO's glazed ceramic tile products promise to bring elegance, harmony, and a luxurious, peaceful feeling to your home.



07 TRENDY COLORS



## FEATURES

- ▶ HIGH DURABILITY
- ▶ AESTHETICS
- ▶ COST-SAVING
- ▶ DRAINAGE AND SELF-CLEANING ABILITY
- ▶ HEAT INSULATION AND AIR CONDITIONING

## ROOF TILES



01. 3-WAY APEX



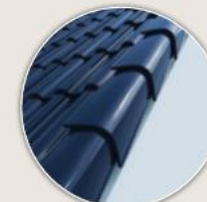
02. Round Ridge



03. Round Hip End



04. Round Ridge end



05. Barge



06. Barge end

## ROOF TILE ACCESSORIES

AMY GRUPO is always proactive in improving and building scientific and professional management system production and business activities, meeting standards on safety and quality of the international market.



# PRESTIGIOUS AWARDS

DOMESTIC & ABOARD



**GOLDEN AWARD**  
INTERNATIONAL DESIGN AWARDS  
2021  
Anion Ultra Thin Porcelain Tile



**BRONE AWARD**  
INTERNATIONAL DESIGN AWARDS 2021  
ANS ABA SPC Flooring



**WINNER**  
LUXURY LIFESTYLE AWARDS  
Best Tile In Asia  
2021, 2022, 2023



**AWARDED**  
BEST COMPANIES TO WORK FOR IN  
ASIA  
HR ASIA AWARDS 2023



Top 100 reputable  
enterprises  
GOLD STAR AWARDS



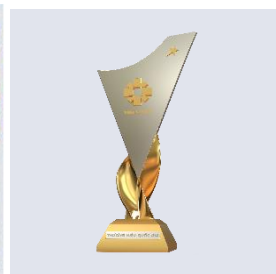
Top 5 prestigious building  
material companies  
VIETNAM REPORT



Top 500 fastest-growing  
companies in Vietnam  
2022, 2023, 2024  
VIETNAM REPORT



Diversity, Equity, & Inclusion  
Award  
HR ASIA AWARDS 2023



Vietnam National Brand  
2024  
AMYGRES TILES

# CERTIFICATIONS

# AMY GRUPO

Build today, last forever!



# AMY GRUPO

 Lot 1, Thai Hoa - Lien Son - Lien Hoa IZ, Hoa Son town, Lap Thach district, Vinh Phuc province

 [infor@amy.vn](mailto:infor@amy.vn)

 0211 6564 999

 [amy.vn](http://amy.vn)